



**India Meteorological Department
(Ministry of Earth Sciences)**

BULLETIN NO. 12 (BOB/06/2022)

TIME OF ISSUE: 1400 HOURS IST

DATED: 16.08.2022

FROM: INDIA METEOROLOGICAL DEPARTMENT (FAX NO. 24643965/24699216/24623220)

TO: CONTROL ROOM, NDM, MINISTRY OF HOME AFFAIRS (FAX.NO. 23093750)

CONTROL ROOM NDMA (FAX.NO. 26701729)

CABINET SECRETARIAT (FAX.NO.23012284, 23018638)

PS TO HON'BLE MINISTER FOR S & T AND EARTH SCIENCES (FAX NO.23316745)

SECRETARY, MOES (FAX NO. 24629777)

H.Q. (INTEGRATED DEFENCE STAFF AND CDS) (FAX NO. 23005137/23005147)

DIRECTOR GENERAL, DOORDARSHAN (23385843)

DIRECTOR GENERAL, AIR (23421105, 23421219)

PIB MOES (FAX NO. 23389042)

UNI (FAX NO. 23355841)

D.G. NATIONAL DISASTER RESPONSE FORCE (NDRF) (FAX NO. 26105912, 2436 3260)

DIRECTOR, PUNCTUALITY, INDIAN RAILWAYS (FAX NO. 23388503)

CHIEF SECRETARY, GOVT. OF CHATTISGARH (FAX NO. 771-2221206)

CHIEF SECRETARY, GOVT. OF JHARKHAND (FAX NO. 651-2400255)

CHIEF SECRETARY, GOVT. OF MADHYA PRADESH (FAX NO. 755-2441076)

CHIEF SECRETARY, GOVT. OF MAHARASHTRA (FAX NO. 022- 22028594)

CHIEF SECRETARY, GUJARAT (FAX NO. 079-23250305)

CHIEF SECRETARY, DAMAN & DIU (FAX NO. 0260-2230775)

CHIEF SECRETARY, DADRA & NAGAR HAVELI (FAX NO. 0260-2645466)

CHIEF SECRETARY, RAJASTHAN (FAX NO. 141-2227114)

CHIEF SECRETARY, UTTAR PRADESH (FAX NO.0522-2239283)

CHIEF SECRETARY, HARYANA (FAX NO. NA)

CHIEF SECRETARY, DELHI (FAX NO. 011-23392102)

Sub: Depression over East Rajasthan and adjoining West Madhya Pradesh

The Depression over East Rajasthan and adjoining West Madhya Pradesh moved nearly west-northwestwards with a speed of 25 kmph during last 6 hours and lay centered at 1130 hours IST of today, the 16th August over the same region near latitude 24.9^oN & longitude 76.1^oE, 30 km southeast of Kota (Rajasthan), 130 km west of Guna (Madhya Pradesh), 70 km southeast of Bundi (Rajasthan) and 220 km southeast of Ajmer (Rajasthan).

It is very likely to continue to move west-northwestwards and weaken gradually into a well marked low pressure area during next 12 hours.

Warnings:

Rainfall:

West Madhya Pradesh: Rainfall at most places with heavy to very heavy rainfall at isolated places on 16th August.

East Rajasthan: Rainfall at most places with heavy to extremely heavy rainfall at isolated places on 16th August and heavy rainfall at isolated places on 17th August.

West Rajasthan: Rainfall at most places with heavy to extremely heavy rainfall at isolated places on 16th August and very heavy rainfall at isolated places on 17th August.

Gujarat Region: Rainfall at most places with heavy to extremely heavy rainfall at isolated places on 16th August and heavy rainfall at isolated places on 17th August.

Saurashtra and Kutch: Rainfall at most places with heavy to very heavy rainfall at isolated places on 16th & 17th August.

Wind: Strong wind reaching 20 to 30 kmph gusting to 40 kmph is very likely to prevail around system center over East Rajasthan and adjoining areas of West Madhya Pradesh, Uttar Pradesh, Haryana & Delhi.

System is under continuous surveillance and the next message will be issued at 2030 hours IST of today, the 16th August, 2022.

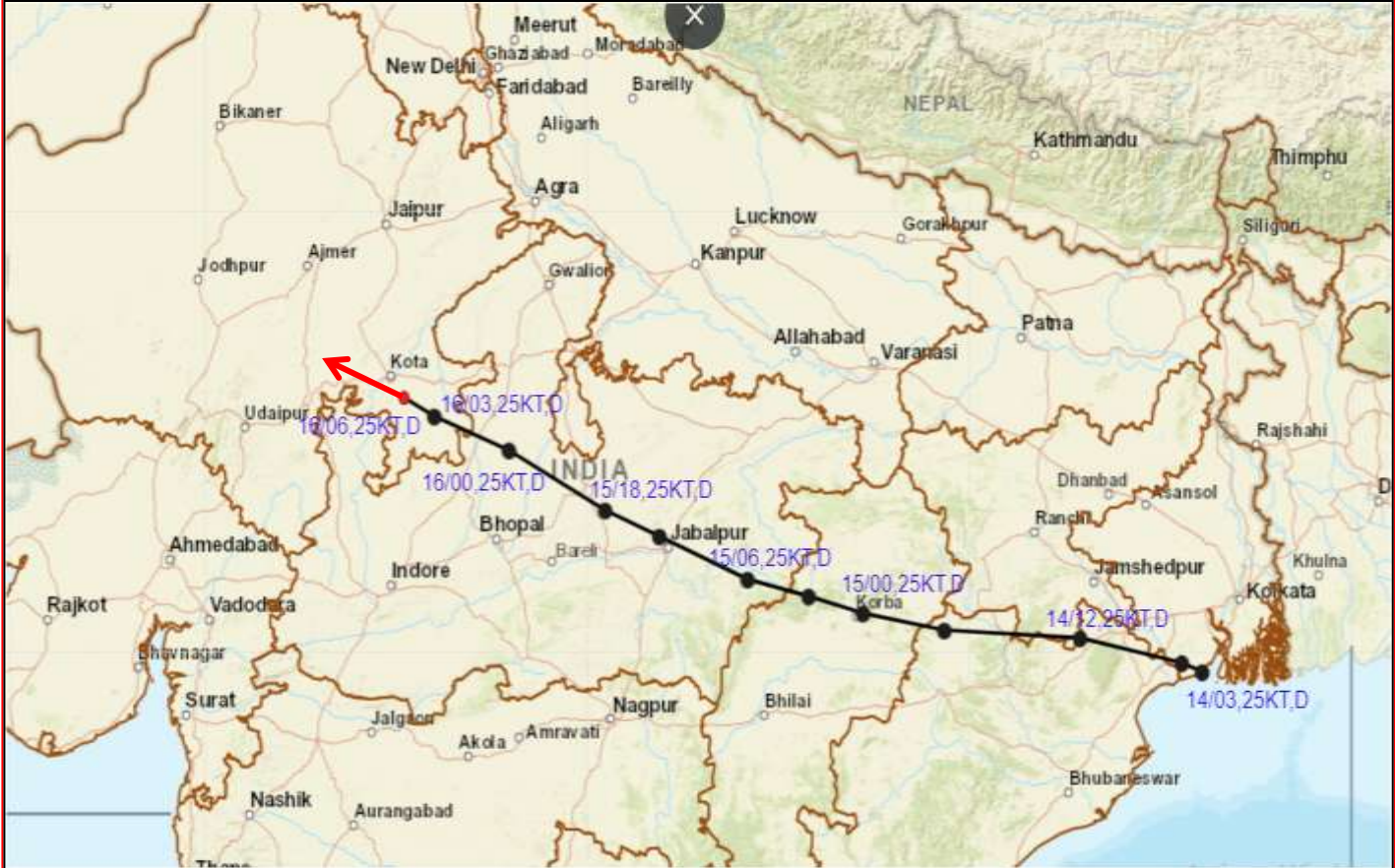
(Dr. AK DAS)
Scientist E, Cyclone Warning Division, New Delhi

Copy to: ACWC Mumbai/ ACWC Kolkata/ ACWC Chennai/ CWC Bhubaneswar/CWC Visakhapatnam/CWC Ahmedabad/ MO Port Blair/MC Raipur/MC Bhopal/MC Hyderabad/RMC Nagpur/MC Goa/MC Bengaluru/CWC Thiruvananthapuram

LEGEND: Heavy Rainfall: 64.5 to 115.5mm, **Very Heavy Rainfall:** 115.6 to 204.4mm **Most Places:** more than 76% of total stations, **Isolated Places:** Less than 25% of total



OBSERVED AND FORECAST TRACK OF DEPRESSION OVER EAST RAJASTHAN ADJOINING WEST MADHYA PRADESH BASED ON 0600 UTC OF 16th AUGUST, 2022



DATE/TIME IN UTC

IST=UTC + 0530

L: LOW PRESSURE AREA

WML: WELL MARKED LOW PRESSURE AREA

D: DEPRESSION (17-27 KT)

DD: DEEP DEPRESSION (28-33 KT)

CS: CYCLONIC STORM (34-47 KT)

SCS: SEVERE CYCLONIC STORM (48-63KT)

VSCS: VERY SEVERE CYCLONIC STORM (64-89 KT)

ESCS: EXTREMELY SEVERE CYCLONIC STORM (90-119 KT)

SuCS: SUPER CYCLONIC STORM (\geq 120 KT)



LESS THAN 34 KT



34-47 KT



\geq 48 KT



OBSERVED TRACK



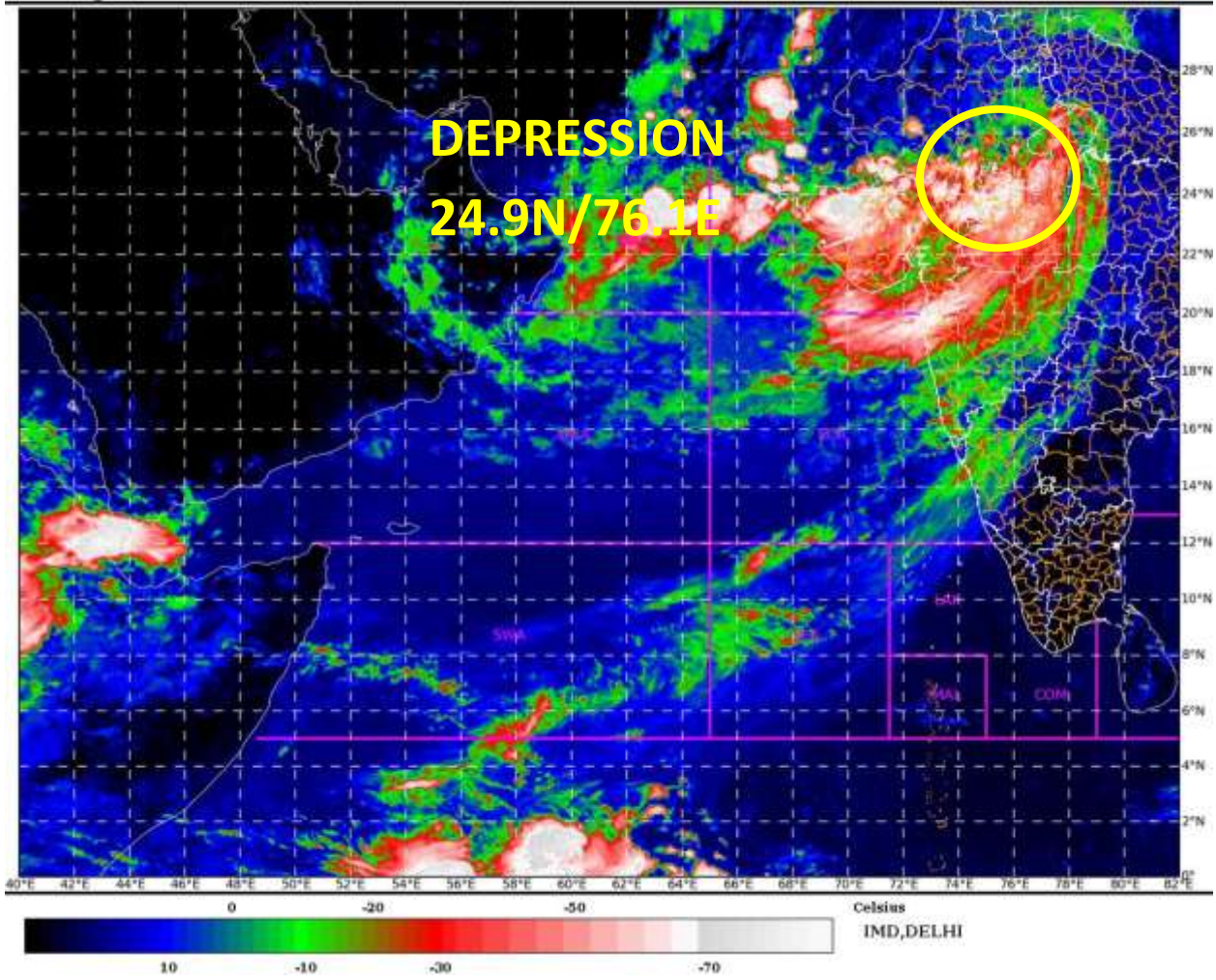
FORECAST TRACK

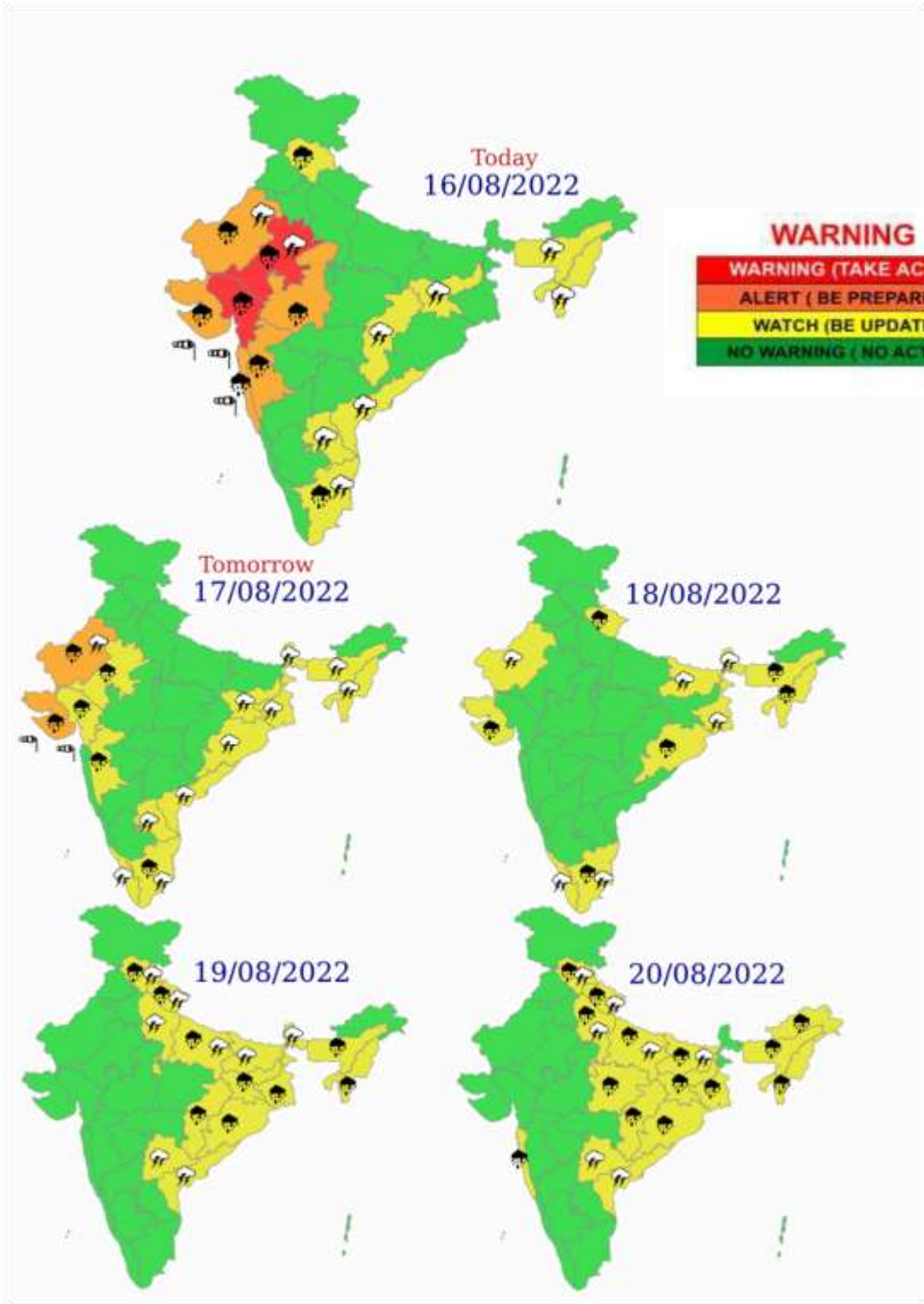


CONE OF UNCERTAINTY

SAT : INSAT-3D IMG
IMG_TIRI_TEMP 10.8 um
ARABIAN SEA

16-08-2022/(0700 to 0726) GMT
16-08-2022/(1230 to 1256) IST





- | | | | |
|--|--|--|--|
|  Heavy Rain |  Heavy Snow |  Thunderstorm |  Dust Storm |
|  Strong Winds |  Visibility |  Cyclone |  Squall/ Hail |
|  Frost |  Cold Wave |  Heat Wave |  Sea State |